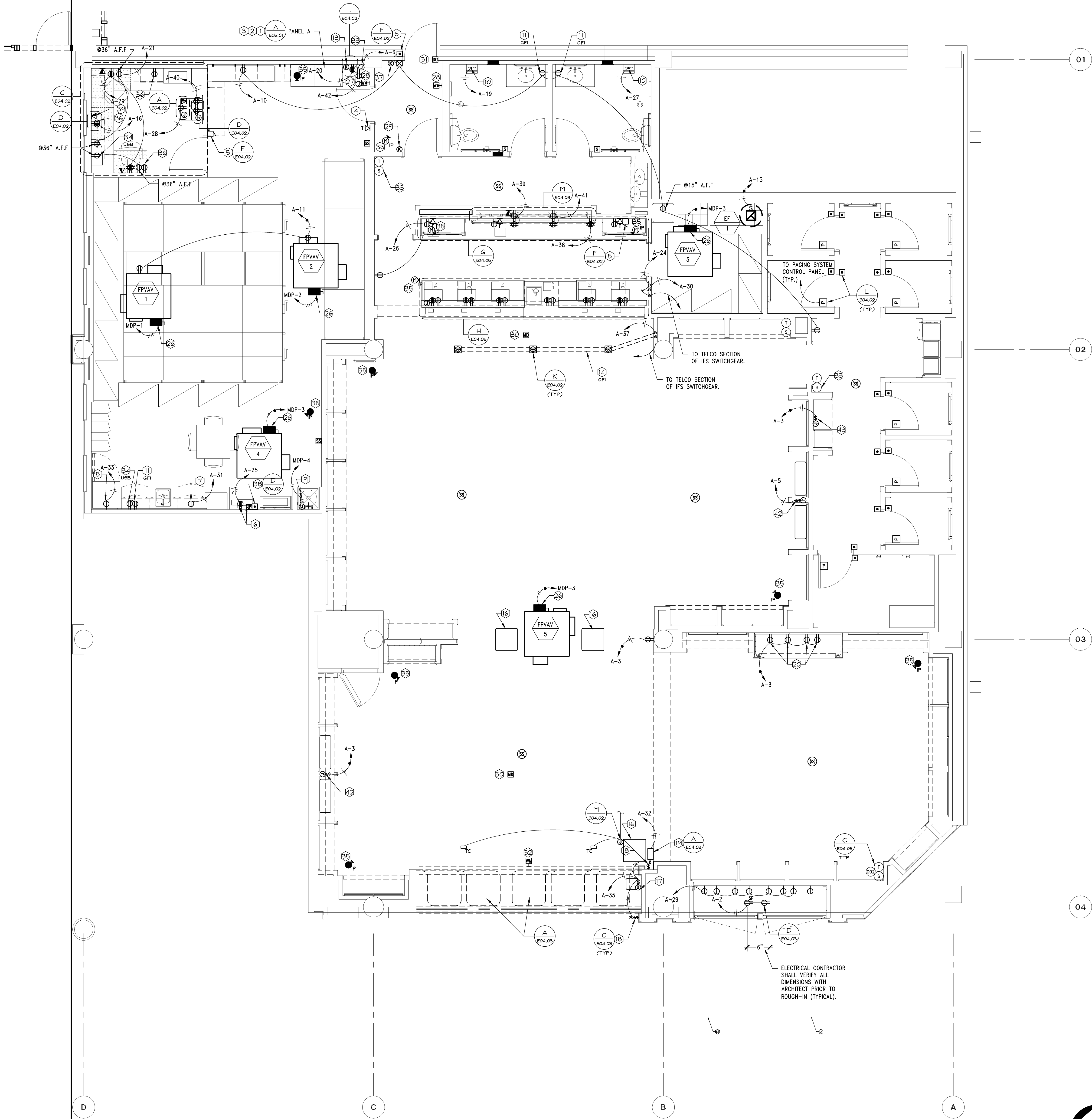
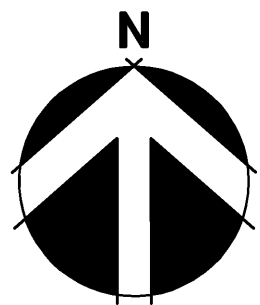


"VERIFY ALL FIELD CONDITIONS PRIOR TO BID"



- 1 EXTEND 1" TELEPHONE CONDUIT FROM SERVICE ENTRANCE AT DEMISING WALL TO TELEPHONE/DATA SECTION OF IFS ENCLOSURE.
- 2 FURNISH AND INSTALL 3/4" CONDUIT WITH PULLWIRE FROM HVAC SECTION OF IFS ENCLOSURE TO ABOVE CEILING. COORDINATE EXACT REQUIREMENT WITH MECHANICAL CONTRACTOR.
- 3 IFS ENCLOSURE. CONDUITS STUBBED INTO IFS ENCLOSURE SHALL BE INSTALLED IN A CLEAN AND NEAT MANNER. ANCHOR IFS ENCLOSURE ACCORDING TO MANUFACTURER'S SPECIFICATIONS AND LOCAL CODES IN SEISMIC AREAS. REFER TO SPECIFICATIONS AND RISER DIAGRAM FOR MORE INFORMATION. MAINTAIN MINIMUM WORKING CLEARANCE IN THE DIRECTION OF ACCESS TO LIVE PARTS OF ELECTRICAL EQUIPMENT PER ADOPTED ELECTRICAL CODE.
- 4 TELEPHONE OUTLET IN WALL. INSTALL EMPTY 3/4" CONDUIT, WITH PULLWIRE, BACK TO TELCO SECTION OF IFS ENCLOSURE. TELEPHONE WIRE AND #RJ14C JACK FOR TWO LINE TELEPHONE BY OTHERS. MOUNT AT 48" AFF, EXCEPT AS NOTED ON PLANS.
- 5 INSTALL DELIVERY BUZZER SYSTEM AS SHOWN ON DRAWINGS. LSD&C SHALL FURNISH COMPLETE EDWARDS DELIVERY BUZZER SYSTEM COMPLETE WITH TRANSFORMER, BUZZERS, LOUVERED COVERPLATES, AND PUSHBUTTON (WEATHERPROOF FOR OUTSIDE LOCATIONS). ELECTRICAL CONTRACTOR SHALL FURNISH AND INSTALL NECESSARY JUNCTION BOXES, CONDUIT, AND WIRE TO COMPLETELY INSTALL DELIVERY BUZZER SYSTEM. JUNCTION BOXES SHALL BE MOUNTED VERTICALLY.
- 6 PROVIDE DEDICATED ISOLATED GROUND DUPLEX RECEPTACLE AND DATA BOX AT 48" AFF FOR A.L.L. SYSTEM.
- 7 MICROWAVE RECEPTACLE @ 42" AFF WHEN COUNTER IS PRESENT, 18" FOR ALL OTHER CASES. IF PLAN LOCATION IS NOT ACCEPTABLE, IMMEDIATELY CONTACT LSD&C PROJECT MANAGER FOR DIRECTION.
- 8 RECEPTACLE @ 18" AFF FOR REFRIGERATOR OR VENDING MACHINE. IF PLAN LOCATION IS NOT ACCEPTABLE, IMMEDIATELY CONTACT LSD&C PROJECT MANAGER FOR DIRECTION.
- 9 JUNCTION BOX FOR WATER HEATER ELECTRICAL CONNECTION. FURNISH AND INSTALL CODE REQUIRED DISCONNECT SWITCH. COORDINATE EXACT LOCATION AND RELATED REQUIREMENTS WITH PLUMBING CONTRACTOR PRIOR TO WORK COMMENCEMENT.
- 10 ELECTRICAL WHIP TYPE CONNECTION FOR HAND DRYER TO BE MOUNTED AT 21-5/8" AFF. AND 3-3/8" IN FROM EDGE OF UNIT. COORDINATE EXACT LOCATION MANUFACTURER INSTRUCTIONS PRIOR TO WORK COMMENCEMENT.
- 11 GFI DUPLEX RECEPTACLE AND COVERPLATE SHALL MATCH WALL COLOR. MOUNT AT 42" AFF.
- 12 JUNCTION BOX AND 1/2" CONDUIT FOR ELECTRONIC ACCESS LOCK. VERIFY CONDUIT SIZE AND PATH WITH SECURITY CONTRACTOR.
- 13 KEYPAD FOR PAGING SYSTEM, MOUNTED AT 48" AFF, ON WALL AND CONNECTED TO MODEM PANEL. REFER TO RESPONSIBILITY SCHEDULE FOR INSTALLATION.
- 14 SAW CUT/CORE DRILL AND PATCH FLOOR SLAB AS REQUIRED FOR UNDERSLAB CONDUIT.
- 15 NOT USED.
- 16 AIR DEVICE OR ACCESS PANEL BY GENERAL CONTRACTOR TO BE USED AS ACCESS TO EQUIPMENT LOCATED ABOVE CEILING AND/OR FOR TRANSMISSION OF ALARM SOUND. CONTRACTOR SHALL BE RESPONSIBLE TO ENSURE THAT A MINIMUM UNOBSTRUCTED FREE AREA OF 3' VERTICALLY AND 3' HORIZONTALLY IN ALL DIRECTIONS AROUND EQUIPMENT IS MAINTAINED TO ALLOW FOR INSTALLATION AND MAINTENANCE OF EQUIPMENT. IF THIS FREE AREA CANNOT BE OBTAINED, IMMEDIATELY CONTACT LSD&C'S PROJECT MANAGER FOR DIRECTION.
- 17 JUNCTION BOX AND CODE REQUIRED DISCONNECT SWITCH FOR MOTORIZED ROLL-UP GRILLE ELECTRICAL CONNECTION. COORDINATE EXACT LOCATION AND RELATED REQUIREMENTS WITH LSD&C PROJECT MANAGER PRIOR TO WORK COMMENCEMENT.
- 18 ELECTRICAL CONTRACTOR SHALL COORDINATE EXACT LOCATIONS OF BARREL KEY SWITCHES BEFORE WORK COMMENCEMENT. ELECTRICAL CONTRACTOR SHALL CONNECT KEY SWITCH TO CONTROL BOARD AND DOOR LOCK INTERLOCK.
- 19 ENCLOSURE WITH SENSORMATIC POWER PACK AND 24 HOUR DEDICATED DUPLEX RECEPTACLE MOUNTED ON VERTICAL FACE OF SOFFIT ABOVE CEILING OR BELOW PLATFORM. ALARM SHALL BE POSITIONED SO IT CAN NOT BE SEEN THROUGH RETURN GRILL. COORDINATE SENSORMATIC FREQUENCY WITH ADJACENT TENANT SENSORMATIC SYSTEMS.
- 20 DUPLEX RECEPTACLES FOR EACH ILLUMINATED LETTER OF PINK SIGN, PROVIDED BY OWNER INSTALLED BY ELECTRICAL CONTRACTOR. SEE ARCHITECTURAL DRAWINGS FOR EXACT LOCATIONS.
- 21 NOT USED.
- 22 NOT USED.
- 23 NOT USED.
- 24 NOT USED.
- 25 NOT USED.
- 26 REFER TO ELECTRICAL EQUIPMENT DATA ON SHEET E05.01 FOR CONDUIT AND WIRE SIZE.
- 27 4"x4" JUNCTION BOX MOUNTED AT 60" AFF WITH 1-1/4" CONDUIT (WITH BUSHING) TO CEILING FOR BURGLAR ALARM. VERIFY EXACT LOCATION WITH LSD&C PRIOR TO WORK COMMENCEMENT.
- 28 INSTALL WALL MOUNTED MOTION DETECTOR AT REAR EXIT AND NEXT TO BURGLAR ALARM AT 7' AFF. VERIFY EXACT LOCATIONS WITH LSD&C PROJECT MANAGER PRIOR TO WORK COMMENCEMENT.
- 29 KEYPAD FOR SECURITY SYSTEM, MOUNTED AT 54" AFF, ON WALL, ON HANDLE-SIDE OF NON-SALES DOOR LEADING TO SALES AREA, AND 3/4" CONDUIT FROM JUNCTION BOX TO ABOVE CEILING.
- 30 INSTALL CEILING MOUNTED MOTION DETECTOR IN EACH STOREFRONT ROOM WITH AN ENTRANCE AND IN FRONT OF EVERY CASHWRAP. VERIFY EXACT COLOR AND LOCATIONS WITH LSD&C PROJECT MANAGER PRIOR TO WORK COMMENCEMENT.
- 31 DOOR CONTACT. GENERAL CONTRACTOR SHALL FURNISH AND INSTALL JUNCTION BOX AND 3/4" CONDUIT FROM ABOVE CEILING TO 6" FROM DOOR, ALIGNED WITH TOP OF DOOR FOR SWING DOORS.
- 32 INSTALL CURTAIN WALL MOUNTED MOTION DETECTOR AT EACH ENTRY/ROLLING GRILLE. VERIFY EXACT LOCATIONS WITH LSD&C PROJECT MANAGER PRIOR TO WORK COMMENCEMENT.
- 33 MONITORING SENSOR MOUNTED AT 48" AFF. SENSOR TO BE ROUTED BACK TO MONITOR CIRCUIT BOARD. PROVIDE JUNCTION BOX NEXT TO IFS PANEL FOR MONITOR CIRCUIT BOARD. PROVIDE AND INSTALL 24 VOLT 150VA TRANSFORMER COMPATIBLE WITH TRANE TRACER MP503 WITH CODE REQUIRED DISCONNECT SWITCH.
- 34 USB CHARGER RECEPTACLE AND COVERPLATE SHALL BE WHITE. PROVIDE DEEP BACK BOX TO FIT RECEPTACLE PER MANUFACTURER REQUIREMENTS. FOR RECEPTACLES MOUNTED NEAR BREAK ROOM SINK, POWER RECEPTACLE ON THE LOAD SIDE OF ADJACENT GFCI PROTECTED RECEPTACLE.
- 35 SECURITY CAMERA DEVICE. HOME RUN AS SPECIFIED IN DETAIL D/E04.02.
- 36 PROVIDE DUPLEX RECEPTACLE FOR UNDER CABINET LIGHTING. REFER TO DETAIL C/E04.02 FOR MOUNTING HEIGHT AND CIRCUITING INFORMATION.
- 37 KEYPAD FOR SECURITY SYSTEM, MOUNTED WITH TOP AT 48" AFF AT LATCH-SIDE OF BACK EXIT DOOR, AND WITH 1/2" CONDUIT UP WALL TO JUNCTION BOX ABOVE CEILING.
- 38 INSTALL BUTTON FOR IP CAMERA SYSTEM ON WALL ADJACENT TO A.L.L. SYSTEM AT 48" A.F.F. COORDINATE EXACT LOCATION WITH LSD&C'S PROJECT MANAGER.
- 39 ROUTE 1/2" CONDUIT BACK TO IP CABINET.
- 40 NOT USED.
- 41 NOT USED.
- 42 PROVIDE JUNCTION BOX WITH TOGGLE SWITCH DISCONNECT FOR SIGN POWER. REFER TO ARCHITECTURAL DETAILS FOR EXACT LOCATION.
- 43 PROVIDE JUNCTION BOX WITH TOGGLE SWITCH DISCONNECT FOR PINK OUTFITTING CENTER LIGHTS. REFER TO ARCHITECTURAL DETAILS FOR EXACT LOCATION.
- 44 PROVIDE CEILING RECEPTACLE FOR CABINET LIGHTING. REFER TO ARCHITECTURAL DETAILS FOR EXACT LOCATION.
- 45 NOT USED.
- 46 NOT USED.

PROJECT INFORMATION:

010501726

PINK VICTORIA'S SECRET

FAYETTE MALL  
3401 NICHOLASVILLE RD  
SPACE # 1-904  
LEXINGTON, KY 40503

SCOPE:  
DESIGN TYPE:  
LSD&C PROJECT #:

NEW PACKAGE:  
PINK GENERATION:  
00062007 A/E PROJECT #:

15153  
20140334

REVISIONS:

REVISIONS:	DATE:
ELITE CONSTRUCTION GROUP LAKE JACKSON, TX PHONE: 979-245-6712 NOTE: THESE PRINTS HAVE BEEN REDUCED BY 50 PERCENT SCALE WILL BE 50 PERCENT OF WHAT IS NOTED ON PLANS	

DATE ISSUED: 09-05-2014  
DESIGNED BY: ST  
DRAWN BY: ST  
CHECKED BY: ATP

ELECTRICAL  
POWER & FIRE  
ALARM PLAN

DRAWING NUMBER:

E02.01

LARSON BINKLEY

Larson Binkley, Inc.  
310 W 20th Street, Suite 200  
Kansas City, Missouri 64101  
Kansas City Certificate of  
Authorization Number 1127

T 816-997-9601  
F 816-997-9602  
lorsonbinkley.com

Limited brands

LIMITED STORE PLANNING, INC.

d/b/a STORE DESIGN & CONSTRUCTION

Three Limited Parkway • Columbus, Ohio 43230

Telephone: 614.415.7000 • Fax: 614.415.7349